

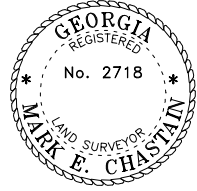
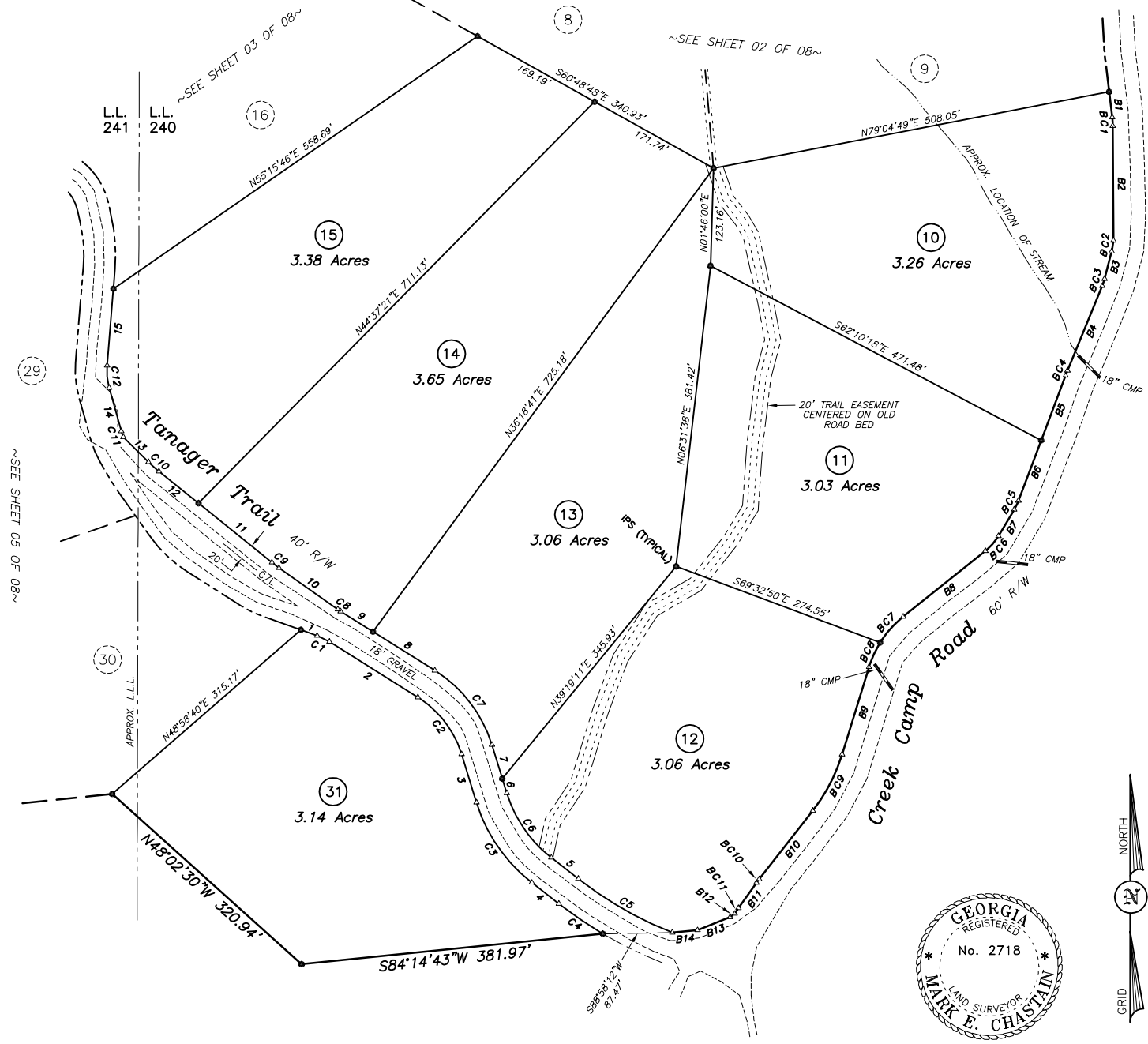
LEGEND

○ (IRB) — IRON PIN	⊗ — FIRE HYDRANT	⊕ — UTILITY VALVE
○ (IOTP) — OPEN TOP PIPE	⊕ — UTILITY POLE	⊕ — TELE PEDESTAL
⊕ (CTP) — CRIMP TOP PIPE	⊕ — WELL	⊕ — POWER BOX
⊕ (IPS) — IRON PIN SET	⊕ — WATER METER	⊕ — SPRING HEAD
● — TREE	— LAND LOT LINE	
⊕ — COMPUTED POSITION	— STREAM OR POND	
⊕ — ROCK	— O/H UTILITY LINE	
⊕ (MON) — MONUMENT	— FENCE	
DB/Pg — DEED BOOK & PAGE	— GRAVEL	
PB/Pg — PLAT BOOK & PAGE	— RIGHT OF WAY	
N/F — NOW OR FORMERLY		
P/L — PROPERTY LINE		
C/L — CENTERLINE		
PP — UTILITY POLE		
PVMT — PAVEMENT		
GRVL — GRAVEL		
P.O.B. — POINT OF BEGINNING		

MONUMENT DIMENSION ARE OUTSIDE/OVERALL DIMENSIONS ALL IPS ARE 5/8" REBAR UNLESS OTHERWISE NOTED AND ARE ALL "FUTURE" SET.

Curve	Radius	Length	Chord	Chord Bear.
BC1	95.00'	10.82'	10.81'	S 03°35'32" E
BC2	70.00'	13.79'	13.76'	S 08°52'48" W
BC3	70.00'	9.50'	9.49'	S 18°24'39" W
BC4	230.00'	6.69'	6.69'	S 21°27'56" W
BC5	70.00'	12.31'	12.29'	S 25°43'30" W
BC6	70.00'	25.44'	25.30'	S 41°10'28" W
BC7	130.00'	43.97'	43.76'	S 41°42'14" W
BC8	130.00'	33.93'	33.83'	S 24°32'16" W
BC9	220.00'	80.44'	79.99'	S 27°32'08" W
BC10	130.00'	5.71'	5.71'	S 36°45'03" W
BC11	130.00'	8.61'	8.61'	S 33°35'39" W

Course	Bearing	Distance
B1	S 06°51'17" E	32.32'
B2	S 00°19'46" E	144.69'
B3	S 14°31'20" W	35.76'
B4	S 22°17'57" W	115.25'
B5	S 20°37'54" W	87.39'
B6	S 20°37'54" W	81.13'
B7	S 30°45'47" W	38.94'
B8	S 51°23'37" W	132.40'
B9	S 17°03'41" W	115.37'
B10	S 38°00'35" W	109.74'
B11	S 35°29'30" W	38.96'
B12	S 54°17'35" W	72.21'
B13	S 68°08'39" W	44.37'
B14	S 84°28'24" W	31.95'



CALL TABLE

Course	Bearing	Distance
1	S 70°16'37" E	21.62'
2	S 57°52'22" E	131.87'
3	S 17°10'04" E	63.63'
4	S 52°01'41" E	43.39'
5	N 52°01'41" W	43.39'
6	N 17°10'04" W	19.03'
7	N 17°10'04" W	44.60'
8	N 57°52'22" W	91.98'
9	N 57°52'22" W	48.19'
10	N 54°40'38" W	90.68'
11	N 51°06'54" W	118.95'
12	N 51°06'54" W	64.02'
13	N 45°25'36" W	44.06'
14	N 15°26'16" W	56.95'
15	N 04°39'21" E	97.12'

CURVE TABLE

Curve	Radius	Length	Chord	Chord Bear.
C1	80.00'	17.32'	17.29'	S 64°04'30" E
C2	130.00'	92.36'	90.43'	S 37°31'13" E
C3	205.00'	124.73'	122.81'	S 34°35'53" E
C4	520.00'	67.22'	67.22'	S 55°44'03" E
C5	480.00'	136.90'	136.44'	N 60°11'56" W
C6	165.00'	100.39'	98.85'	N 34°35'53" W
C7	170.00'	120.77'	118.25'	N 37°31'13" W
C8	80.00'	4.46'	4.46'	N 56°16'30" W
C9	180.00'	11.19'	11.19'	N 52°53'46" W
C10	180.00'	17.87'	17.86'	N 48°18'15" W
C11	80.00'	7.79'	7.79'	N 18°13'37" W
C12	80.00'	28.06'	27.91'	N 05°23'27" W

Final Plat For:
The Ridge At Anderson Creek
 LAND LOT(S) — 240 & 241
 DISTRICT — 6th SECTION — 2nd
 CO — GILMER STATE — GEORGIA
 DATE — MAY 11, 2006

Chastain & Associates, P.C.
 LAND SURVEYING and PLANNING
 P.O. Box 1624 — Ellijay, Georgia 30540
 Phone: (706) 276-7528
 PLOT FILE: 204K13FP6 **SHEET 06 OF 08**